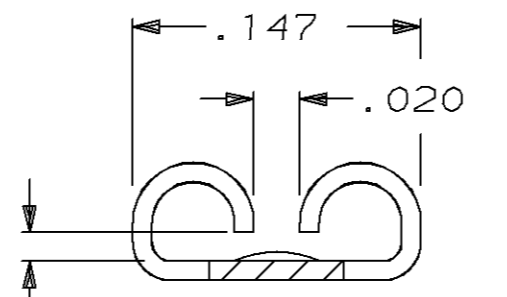
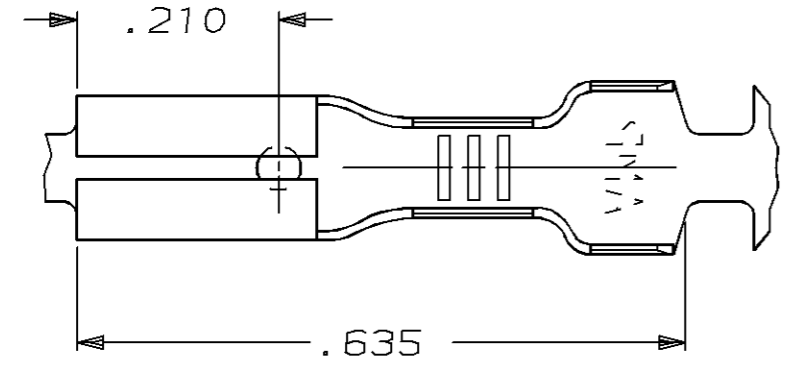


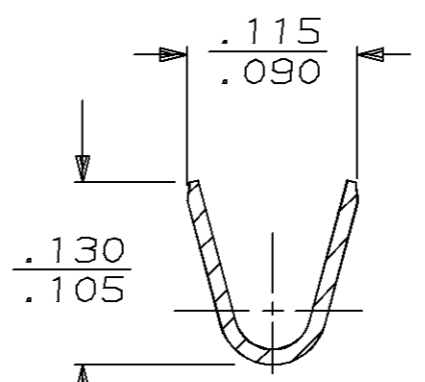
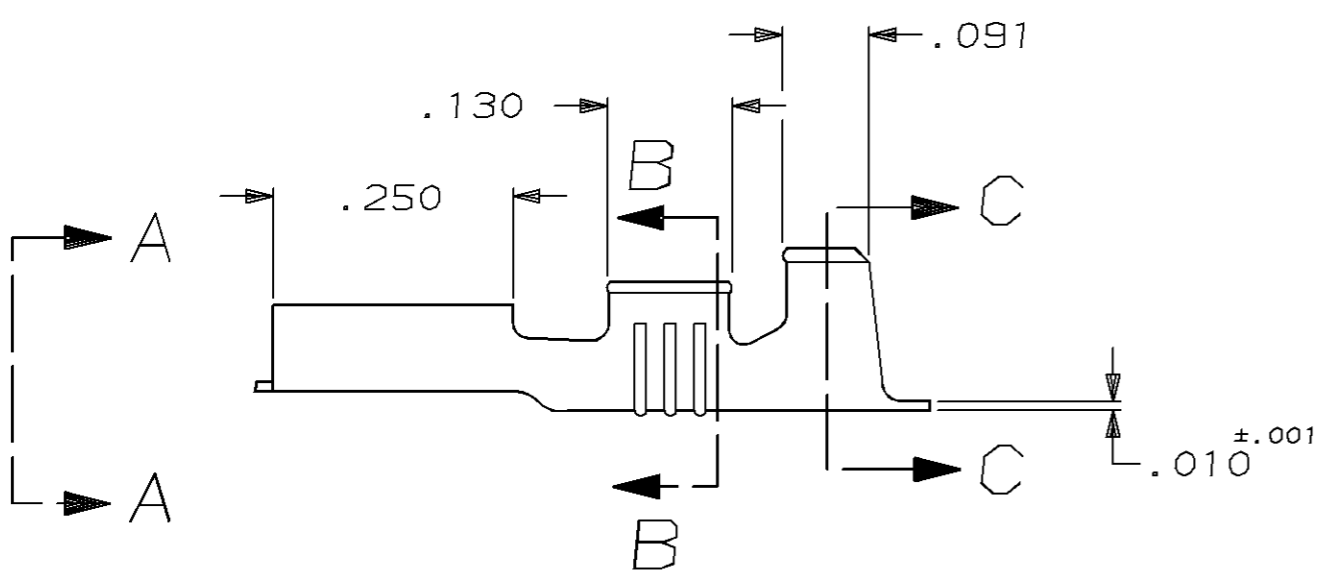
THIS DRAWING IS UNPUBLISHED. RELEASED FOR PUBLICATION, 19
 © COPYRIGHT 19 BY AMP INCORPORATED, HARRISBURG, PA. ALL INTERNATIONAL RIGHTS RESERVED. AMP PRODUCTS MAY BE COVERED BY U.S. AND FOREIGN PATENTS AND/OR PATENTS PENDING.

LOC	DIST	P	F	ZONE	LTR	DESCRIPTION	DATE	APPROVED
AF	50				D	ADDED -2 PER 0710-0079-96	3/5/96	JR/PD

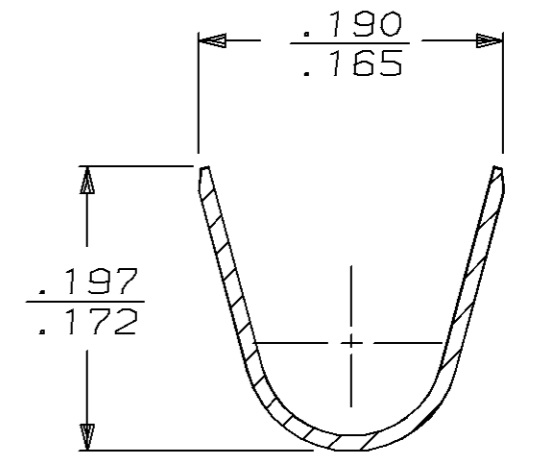
- 1 CONTINUOUS STRIP ON REELS.
- 2 MATING TAB THK TO BE $.032 \pm .001$.
- 3 WIRE SIZE IS #20-#16 AWG.
- 4 INSULATION RANGE TO BE $.120-.140$ DIA.



FITS .110 SERIES FASTON TAB
 VIEW A-A



SECTION B-B



SECTION C-C

TYPE	WIDTH	STRIP LENGTH ±.015	TYPE	WIDTH	±.002 HEIGHT	WIRE
F	.155	.188	F	.070	.060	16
					.051	18
					.045	20
INSUL BARREL CRIMP			WIRE BARREL CRIMP			

UNLESS OTHERWISE SPECIFIED DIMENSIONS ARE IN INCHES TOLERANCES ON:
 2 PL DEC ± -
 3 PL DEC ± .015
 ANGLES ± -
 MATERIAL SEE TABLE
 FINISH SEE TABLE

FINISH	MATERIAL	PART NO
.000150 MIN NICKEL	082 STEEL	62050-2
PRE-TIN	H04 BRASS	62050-1
AMP AMP INCORPORATED Harrisburg, Pa. 17105		
NAME RECEPTACLE, FASTON,™ .110 SERIES		
SIZE B	FSCM NO 00779	DRAWING NO 62050
WEIGHT -	APPLICATION SPEC 114-2036	SHEET 1 OF 1
	SCALE NTS	